

OTDR MULTI-FUNCTION TESTER

All Functions in 1 Device, Pocket-sized, Easy-to-use, and Affordable for Technicians at Any Level

The device is with 3.5 inch Capacitive LCD screen, supporting both touch and physical buttons operation. It can be charged by Type-C USB. Wireless charging is optional.

With new automatic laser detection technology, optical modules can be protected to be damaged when light (up to -2dBm) is running on the testing fiber.

The OTM1000 integrates with 9 functions for almost all situations in fiber network installation or maintenance.

Features

- Single, dual wavelength light-weight OTDR
- Combines all essential fiber tests in one handheld with OTDR, OPM, OLS, VFL, etc
- Easy to understand OTDR analysis with event map result view and pass/fail indications
- Access network or point-to-point network verification or troubleshooting
- Detect light in the fiber and report to user
- Rubber case to protect against socks and vibration
- Full screen display



OTDR | Optical Power Meter | Optical Light Source | Visual Fault Locator | Insertion Loss Testing | Event Map | LED Light | RJ45 Cable Testing

Configuration

Model#	Hot Sale			
	OTM1000-D24	OTM1000-A27	OTM1000-A10	OTM1000-A25
Wavelength	1310/1550±20nm	1550±20nm	1610±20nm	1625±20nm
Dynamic Range	24/22dB	27dB	22dB	22dB
Testing Range	3m to 80km	3m to 80km	3m to 80km	3m to 80km
OTDR	√	√	√	√
Power Meter	√	√	√	√
Light Source	√	√	√	√
Visual Fault Locator	√	√	√	√
Insertion Loss Testing	√	√	√	√
LED Light	√	√	√	√
Event Map	√	√	√	√
RJ45 Sequence	√	√	√	√
RJ45 Tracking	√	√	√	√
Active Fiber Testing	x	√	√	√

The Kit Includes: OTDR, FC/SC Connector, User Manual, Touch Pen, TF Card, OTDRviewer Software, Power Charging Adapter, Cleaning Tool, Carrying Case, Certificate of Calibrate

Note: OTM1000-A27/A10/A25 is with Filter for Active in-service Fiber Testing.

General	
Size/Weight	175x125x30mm/ 430g (Battery included)
Display	3.5 inch touch-sensitive TFT Screen, 320x480 Resolution
Interface	Type-C USB, SD port, OTDR port, VFL port, Power Meter Port, Charging Port
Power Supply	Input: 100V(ac) to 240V(ac), 50~60Hz, 0.8A; Output: 9V(DC), 2A 4000mAh/3.7V Lithium battery
Battery	Standby Time>20 hours, Testing time>12 hours, Booting Time <10s
Dust proof	Dust-proof Standards IP5X, Water Resistance Standards IPX2
Laser Safety	CFR Class I
Data Storage	Internal Storage 1000 curves, SD card 1GB
Language	English, Spanish, French, Korean, Italian, Portugal, Russian, Vietnam
Environmental Conditions	Operating temperature and humidity: -10°C~+55°C, ≤95% (non-condensation) Storage temperature and humidity: -30°C~+70°C, ≤95% (non-condensation)

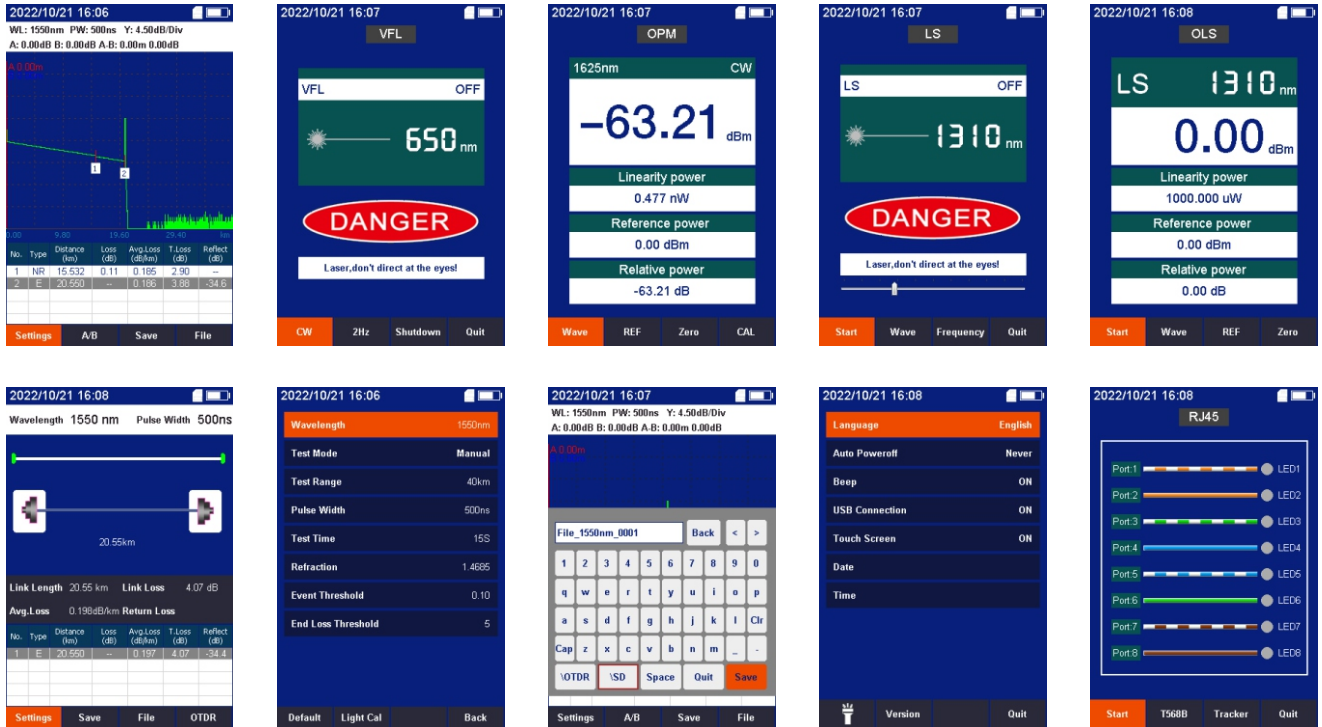
OTDR Module	
Pulse Width	3ns, 5ns, 10ns, 20ns, 50ns, 100ns, 200ns, 500ns, 1μs, 2μs, 5μs, 10μs, 10μs
Distance Range	100m, 500m, 1km, 2km, 5km, 10km, 20km, 40km, 60km, 80km
Sampling Resolution	Minimum 0.025m
Sampling Point	Maximum 128,000 points
Linearity	≤0.05dB/dB
Display Range	1.25dB to 40dB
Deadzone	Event deadzone 2.5m, Attenuation deadzone 8m
Distance Accuracy	±(1m+measuring distance×3×10 ⁻⁵ +sampling resolution) (excluding IOR uncertainty)
Threshold Level	Auto, Customized -11 to -99dB Step 1dB
Loss Resolution	0.001dB
Distance Resolution	0.001m
IOR Setting	1.0~1.9, 0.0001 step
Units	km, miles, kfeet
OTDR Trace Format	Telcordia universal, SOR, issue 2(SR-4731)

VFL Module	
Wavelength	650nm
Output Power	10mw, CLASSIII B
Range	12km
Launching Mode	CW/1Hz/2Hz

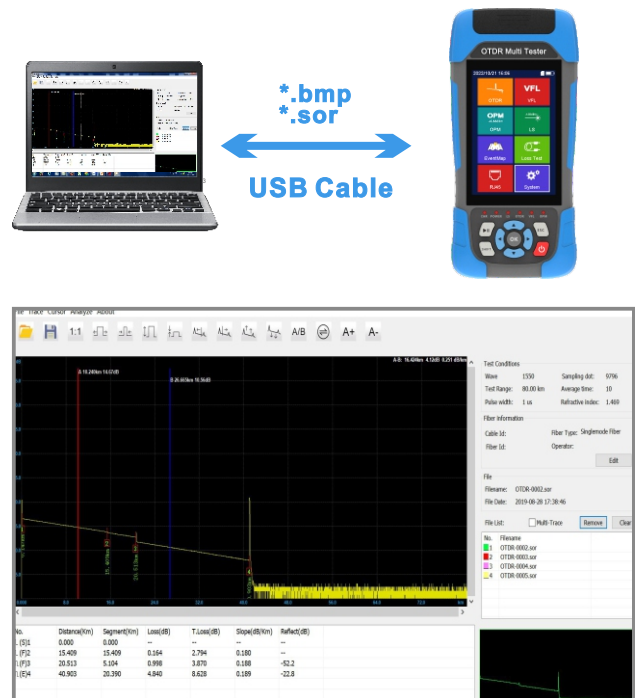
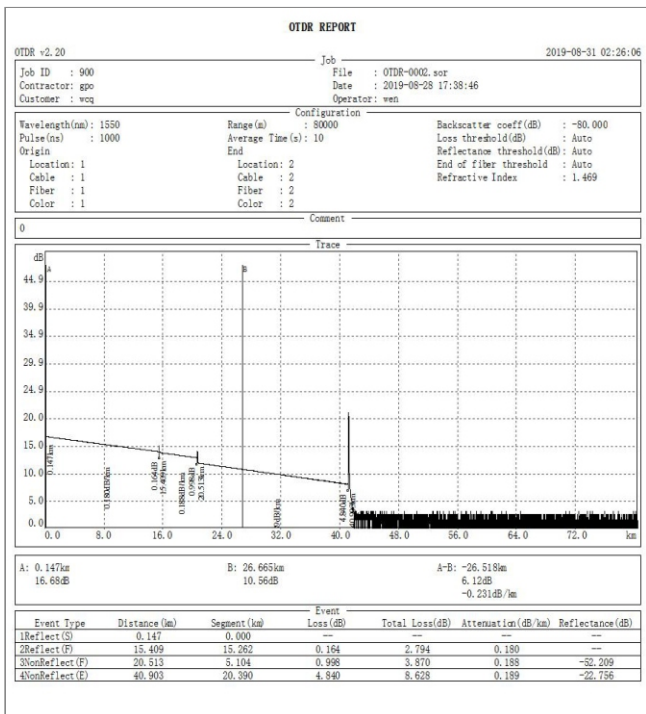
OPM Module	
Wavelength	850/1300/1310/1490/1550/1625/1650nm
Test Range	-70~+ 10dBm, -50~+ 26dBm (Optional)
Resolution	0.01
Accuracy	±0.35dB±1nW
Modulation	CW/270/330/1k/2k Hz, Pi≥-40dBm

OLS Module	
Wavelength	Same as OTDR Wavelengths
Output Power	-5dBm±2dB
Output mode	CW/270/1k/2k Hz

Functions Display



OTDR Report Printing



OPTIMUS DEVICE COMPANY LIMITED
 291 Brighton Road, South Croydon, United Kingdom, CR2 6EQ
 www.optimusdevice.com info@optimusdevice.com
 Tel/Fax: +44 7768197061